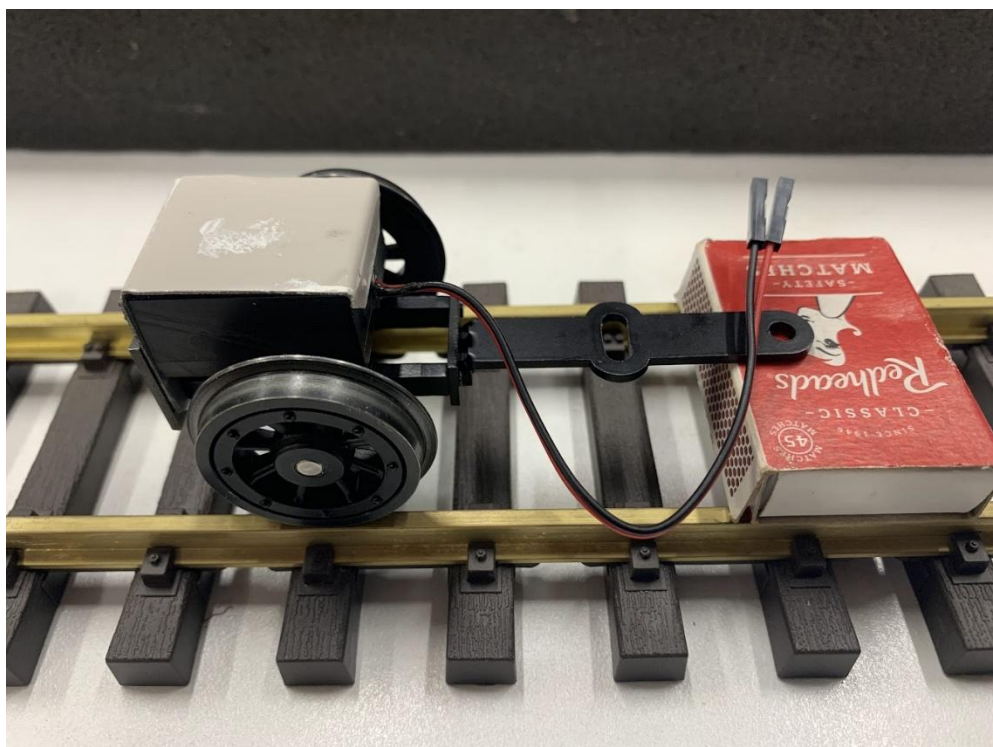


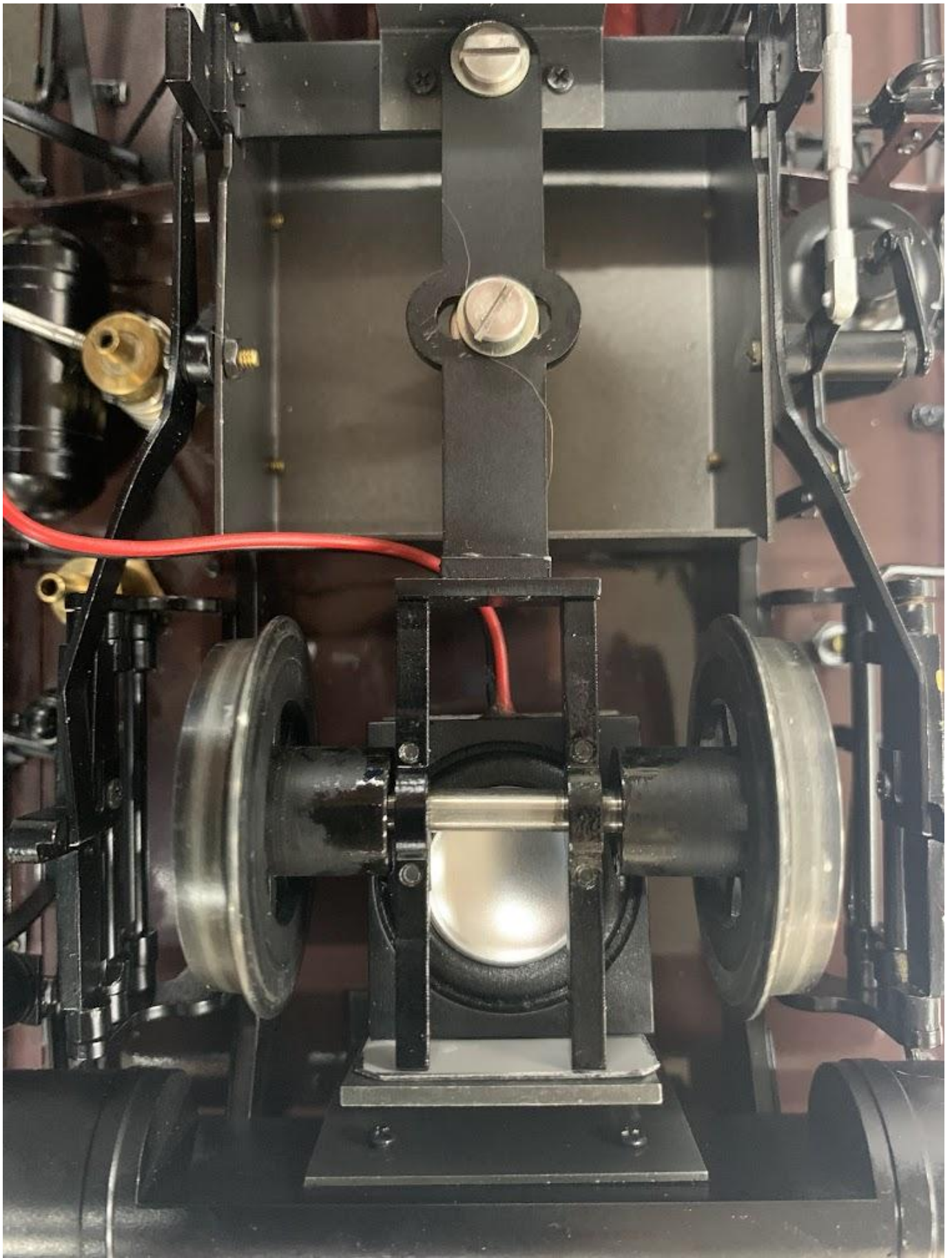
**Installing the 'My Loco Sound' whistle unit in the
2025 Accucraft Victorian Railways
'NA' class 2-6-2T. Live Steam 'Puffing Billy' model**




The sound unit is powered and activated by the model's RC control system, therefore the installation of an RC unit is a prerequisite for fitting the sound unit. Page and item numbers refer to the 'Assembly Illustrates Handbook'

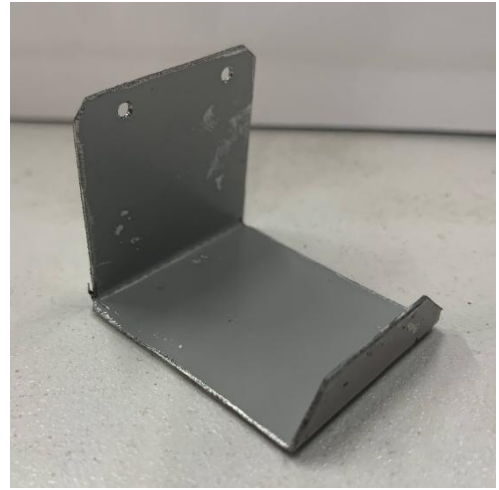
The best location for the speaker unit is mounted face down, riding piggy back on the rear pony truck.





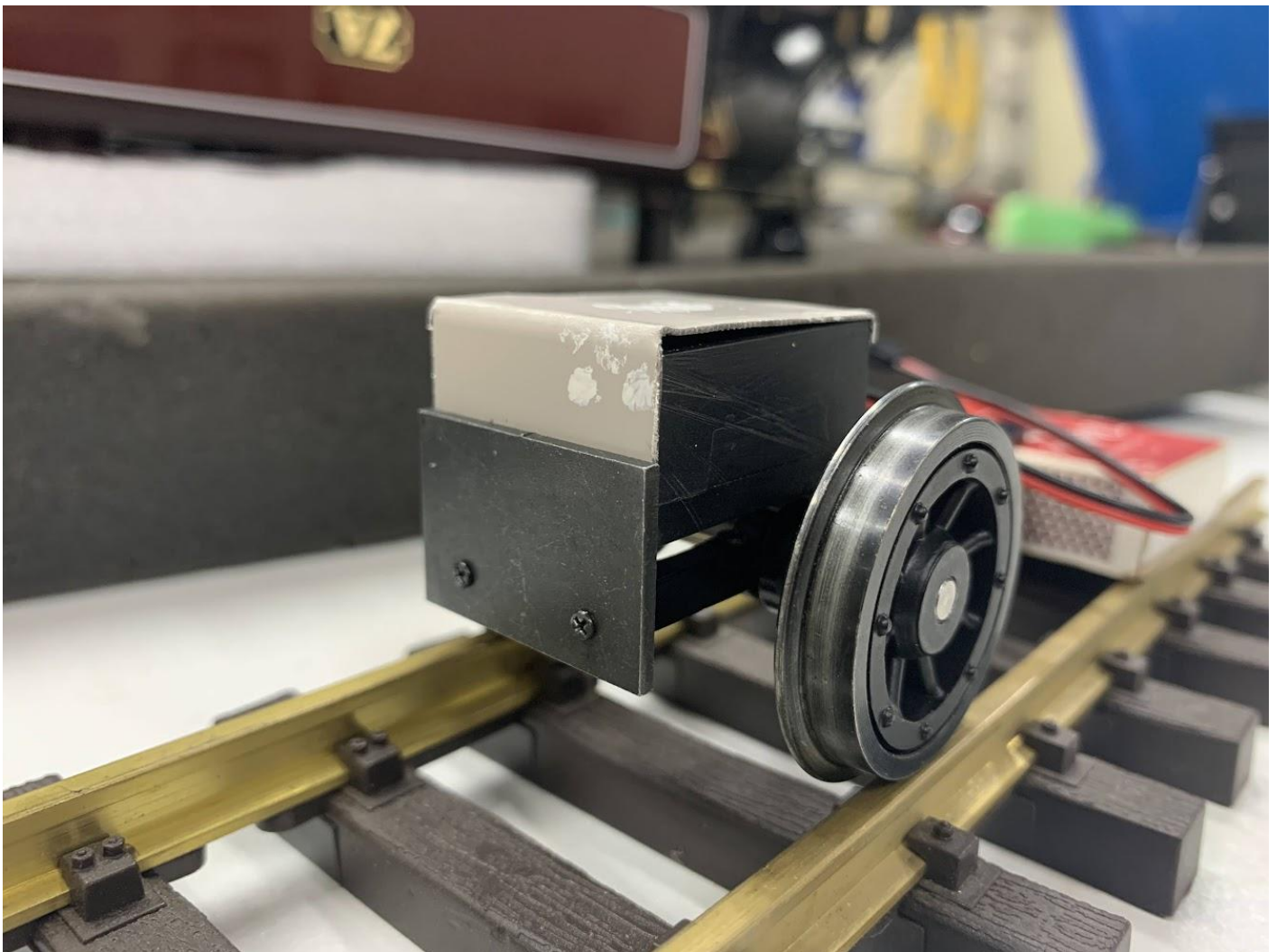
Parts Required

- Electronic sound unit from 'My Loco Sound'
- Speaker mounting saddle 
- 4mm drill



Installation

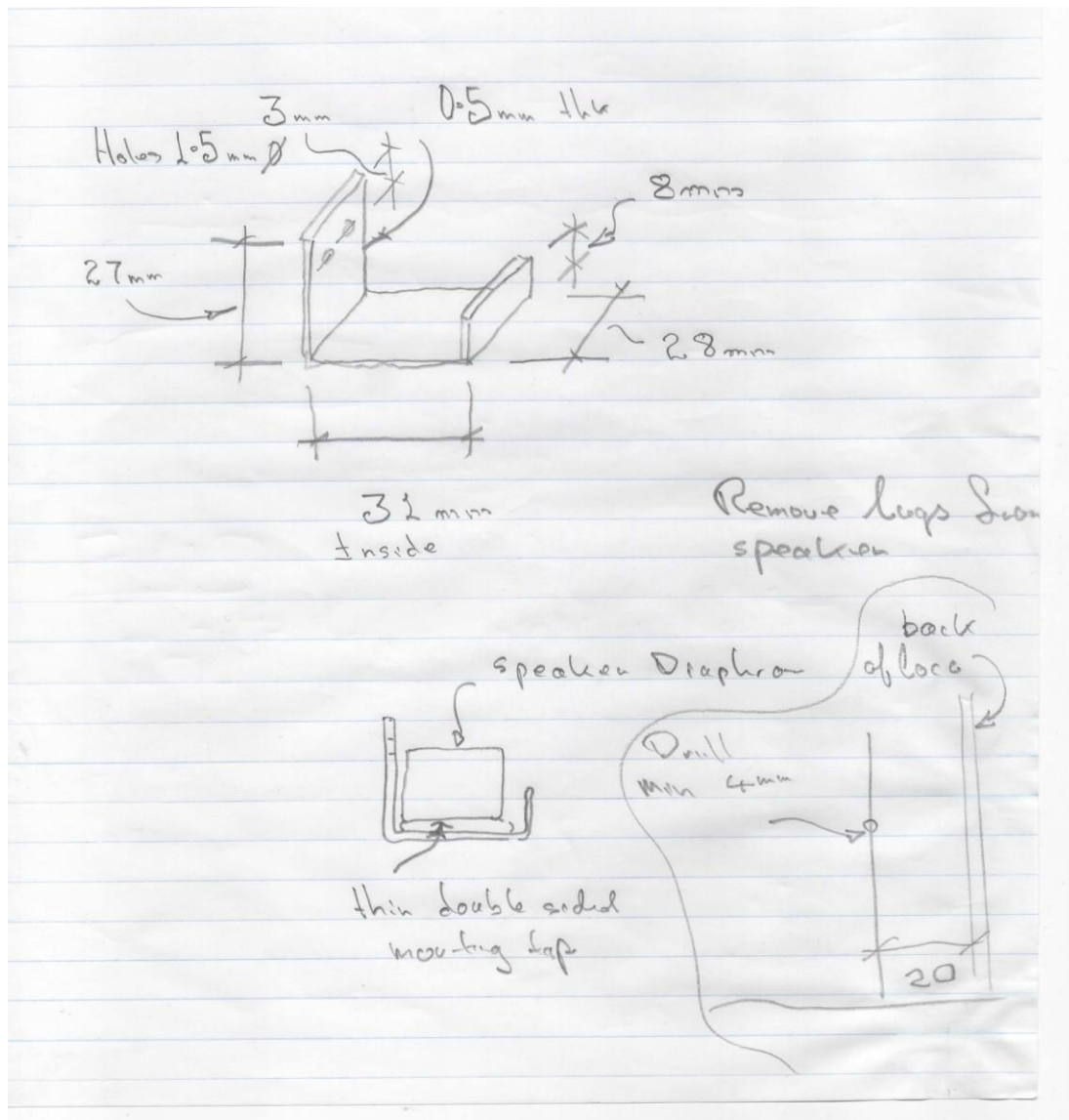
1. Removal of the rear pony truck from the loco. (page 15)
2. Remove (cut) the plastic mounting lugs off the speaker box leaving a clean smooth surface.
3. Apply a thin, double sided tape to the back of the speaker box and install the speaker into the mounting saddle.
4. Remove the rear plate from the Pony Truck and attach the speaker saddle using the existing screws.



5. Remove the 'Air Tank' and 'Air Tank Support' (Page 9 Items 15 & 16 in the Illustrated Parts List)
6. Mark out and drill a 4mm hole through the cab floor to allow the speaker wire to access the RC receiver unit inside the cab. (see image below).
7. Connect the speaker wire to the Sound Unit inside the cab and plug the Sound Unit into the spare servo pin on the receiver unit



Details for Speaker Saddle



Material:
0.5mm sheet steel

Location of mounting holes
Align with Rear Pony Truck Bolster (Pg 3 item 6)